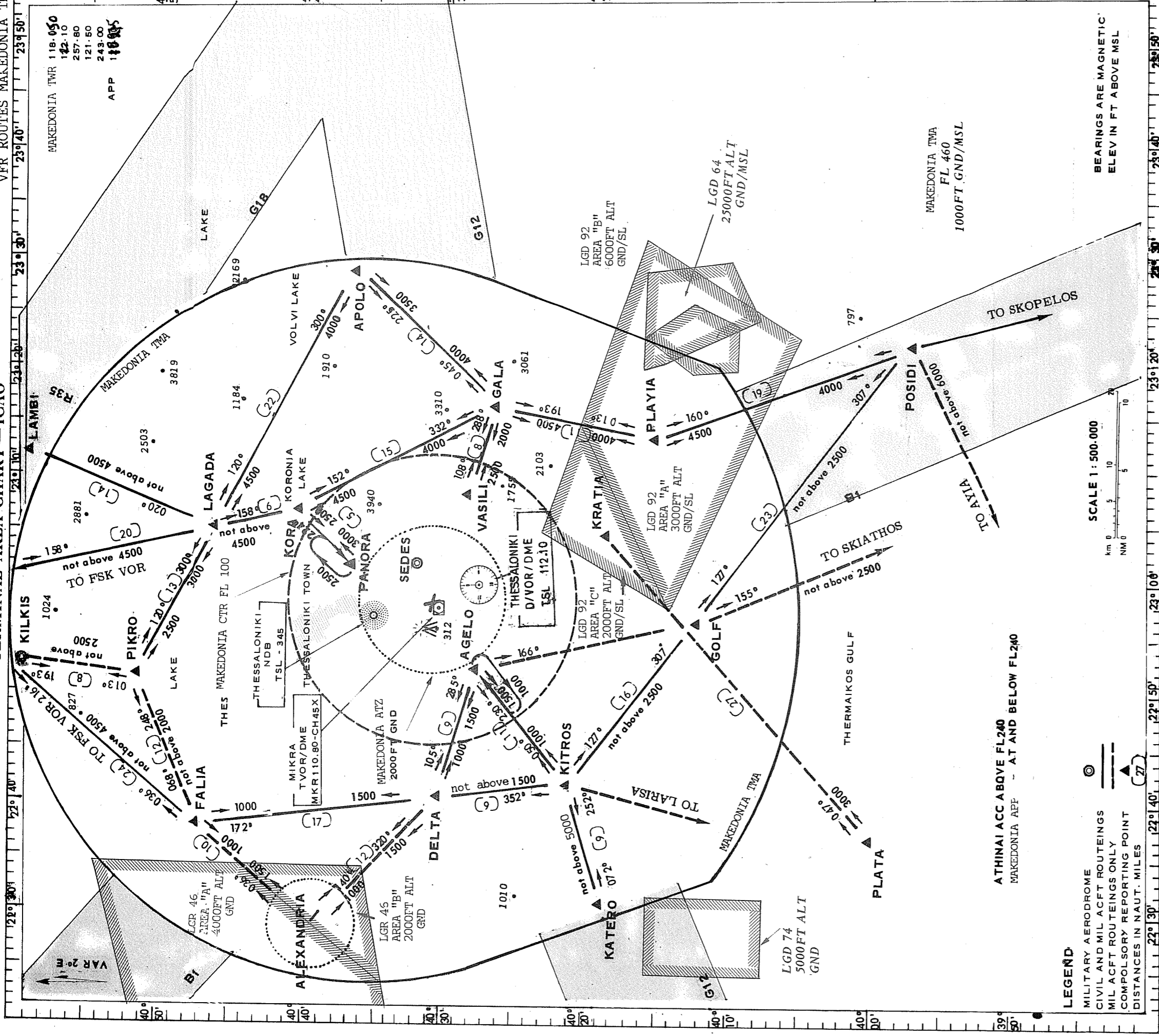


MAKEDONIA TWR 118.050
 122.10
 257.80
 121.50
 243.00
 APP 118.05



ATHINAI ACC ABOVE FL240
 MAKEDONIA APP - AT AND BELOW FL240

LEGEND:
 MILITARY AERODROME
 CIVIL AND MIL ACFT ROUTINGS
 MIL ACFT ROUTINGS ONLY
 COMPULSORY REPORTING POINT
 DISTANCES IN NAUT. MILES

SCALE 1 : 500.000
 km 0 5 10
 NM 0 5 10

BEARINGS ARE MAGNETIC
 ELEV IN FT ABOVE MSL

EGTS VFR

MAKEDONIA TMA VFR ROUTES

1.- Pilots following the VFR routes of Makedonia TMA should comply with the following rules :

1.1 Aircraft (including helicopters) flying under VFR within Makedonia TMA, should follow the VFR routes and altitudes as depicted in the attached chart unless VFR criteria require otherwise or a special authorization is granted from the appropriate ATC unit.

1.2 Should air traffic conditions require, ATC may assign different VFR routes. Also when deemed necessary by the pilots to deviate from the specified routes and/or altitudes they should communicate with Makedonia Approach Control prior entering Makedonia TMA or immediately after departure to obtain clearance for deviation.

1.3 Position reports must be given to the appropriate ATC unit (Makedonia Approach or Tower) when over compulsory reporting points depicted on the attached chart.

1.4 A continuous watch must be maintained on the appropriate frequency with Makedonia Approach or Tower when flying the VFR routes depicted on this chart.

1.5 Cancellation of IFR flight plan within Makedonia TMA is subject to ATC approval. Aircraft cancelling their IFR flight plan, should also follow the VFR routes as above.

1.6 Route PLATA to KRATIA should be used only by Military aircraft flying to Danger Area LGD 92 (Potidea). These aircraft will leave this area making a right turn proceeding to point POSIDI (Cape Cassandra) at 3000ft then to AYIA point (position 394245N 224515E within Larisa MTMA) climbing not above 6000ft and contacting Larisa APP entering Larisa MTMA.

Note : These aircraft will be in contact with Makedonia APP and use Makedonia QNH.

IT IS REMINDED THAT ON VFR ROUTES THE RESPONSIBILITY TO AVOID COLLISION WITH OTHER AIRCRAFT AND PROVIDE TERRAIN CLEARANCE RESTS WITH THE PILOTS.